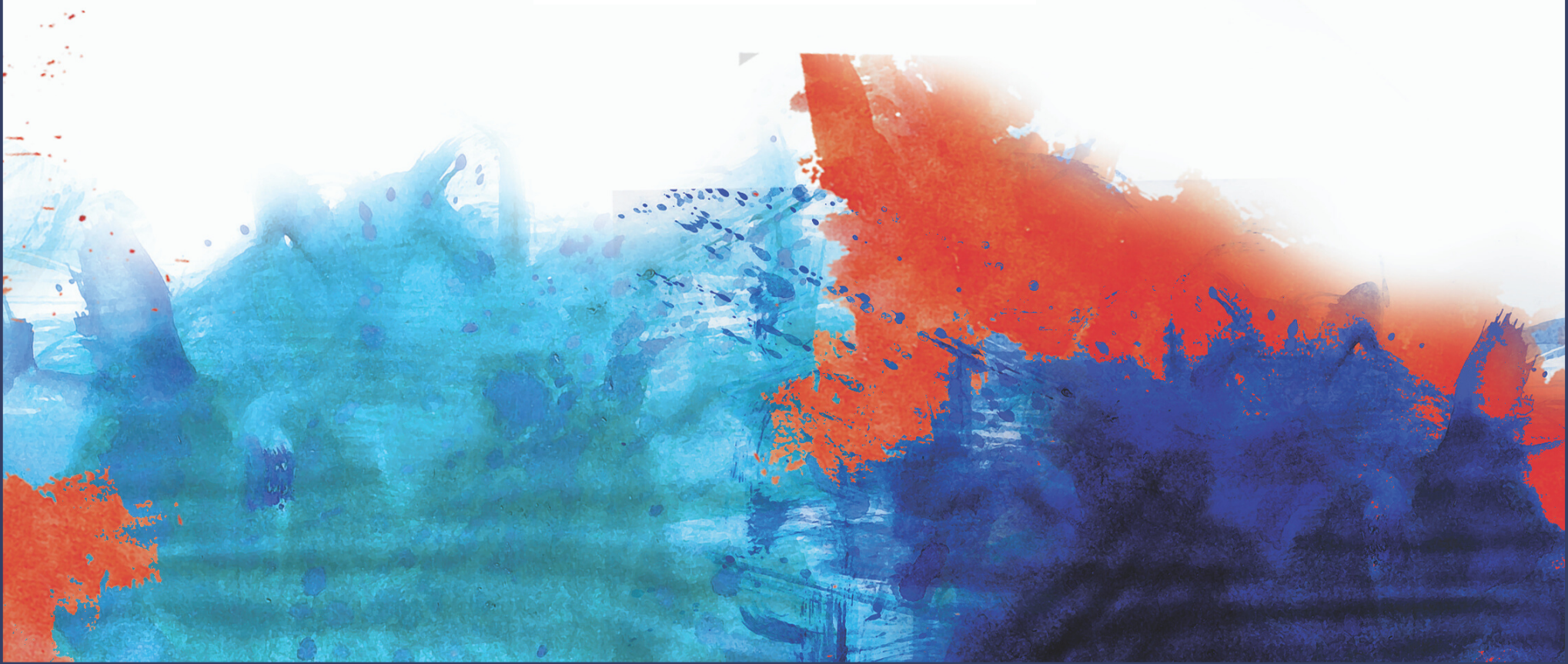




THE
SHIISHYAA
SCHOOL
LIVE TO LEARN!







OUR APPROACH

Our journey at The Shiishyaa School began in 2010 with an academic strength of just eleven.

In a short span we've been successful enough to inspire the love for learning amongst our 180 students and their parents.

The Shiishyaa School is an integral part of the Shiishyaa Educational Society that was founded in March 2010, with the aim of creating a passion for continuous learning and enriching lives.

We've also been fortunate to have helped and supported under-privileged children with either medical problems or educational shortcomings.

We take pride in our association with the Have A Heart Foundation that treats children with heart problems.

OUR FACILITIES

FOR STUDENTS

- A lot of space for the children to play and learn, the school is spread across 10,000 sq. ft. with a well-managed helpdesk for instant inward and outward communication
- CBSE curriculum with X-Seed, an innovative and proven way of teaching
- A well-equipped library and computer laboratory
- Highly qualified and experienced staff
- Transport facility
- Doctors on call
- Medical checkups (pediatric, dental and ophthalmic) with our health program partners Oyster N Pearl Hospital

Computer Lab

With the latest models of computers and latest software available at Shiishyaa, the children learn quickly and easily

Transport Facilities

Well maintained children-friendly buses for pickup and drop accompanied by a care giver for safety purposes

Library

Well stocked library with books both recreational and educational in nature. Children would never want to leave.

Doctor-On-Call

Children can take ill easily so Shiishyaa has a medical team capable of handling any or all emergencies

Multi-media room

With the latest audio-video aids for watching, listening and educating students through interactive programs

Sports Facilities

We have multi sports program for children aged 2 year and above like soccer, sliding, jumping, hoping etc

Safety & Security

Shiishyaa is constructed, designed and maintained in compliance with fire safety regulations.

Mental Health

A Child's mental health is exceptionally delicate - this is why Shiishyaa has an Expert team of counselors and child psychologists

Health Checkups

Pediatric, ophthal and dental checkups once in a year for students. Programme partnered with Oyster N Pearl,



PLAY GROUP

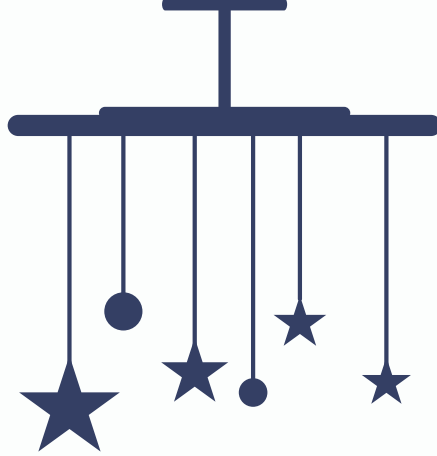


Toddlers are supposed to be the most difficult to handle. But at The Shiishyaa School, the terrible twos are considered the best time for exploratory learning. Activeness, inquisitiveness, trial and errors are encouraged here.

The caring and stimulating environment, rich in responsive interactions and relationships at Shiishyaa promotes the development of a toddler's language and communication skills as well as his/her physical growth. Indeed they love learning here!

NURSERY





Our nursery curriculum reinforces development of expressive language, communication and vocabulary. Children learn naturally through experience and real life play situations. Personal, emotional and social development is actively promoted at this stage.



**JUNIOR &
SENIOR KG**

JUNIOR KG

In this stage understanding of content, skills and concepts is emphasised on. The curriculum reinforces children's competencies in language as tools for learning and communications. Reading, phonetics and numeric skills are also introduced.

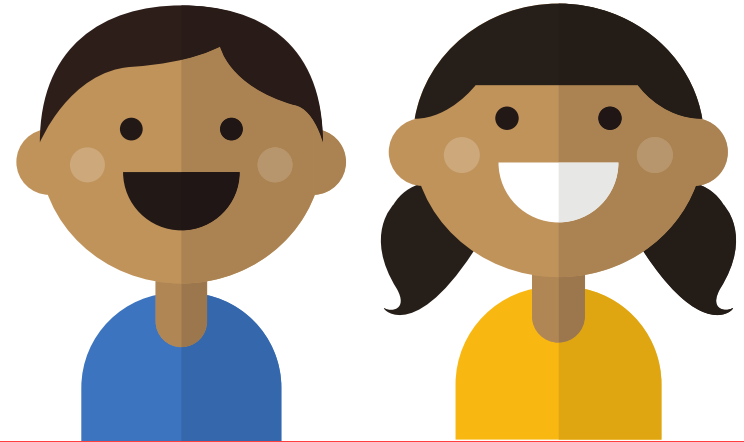
SENIOR KG

At this stage physical skills refine enabling children to begin practicing writing. Personal and social development continues to be priority, resulting in greater autonomy, independence, enhanced self-help skills, self-concept and confidence.



PRIMARY

PRIMARY



The CBSE curriculum has been developed adhering to the highest international standards, focusing on imparting skill-based-knowledge using sequential learning techniques. In order to open up minds and break all the barriers that confine learning.

We follow the required best books as per the CBSE standards. Its a very focussed and holistic type of education that we provide. Assessment is based on the Continuous And Comprehensive Evaluation Method.

An abstract horizontal band with a textured, painterly appearance. The colors are primarily shades of blue and teal, with splashes and streaks of bright orange and red. The overall effect is dynamic and artistic.

SPECIAL NEEDS



SPECIAL NEEDS

At The Shiishyaa School, we believe everyone has the right to learn and that inside everyone there is a dormant love for learning, which needs to be woken up. And so Shiishyaa has an education centre specially created for children with special needs. As they have difficulty in processing information the usual way through our senses such as sound, sight and smell. We don't let this lifelong disability affect a child's life and love for learning.

We accommodate children with learning Disability---Border line cases of Autism and CP. At Shiishyaa, sensitivity towards specific needs of special children is definitely cherished and built upon. Spreading awareness among parents is also done regularly with frequent interactions with specially trained and highly motivated teachers. Shiishyaa's students include children with special needs such as children with autism, Down's syndrome, Asperser's, Attention deficit, Depression, Anxiety, and children who have other social and emotional learning differences.

DAYCARE



Shiishyaa's Day Care facilities are best suited for children from ages 1+ and is open for all the students.



DAYCARE

- Highly qualified supervisors and attendants who genuinely care
- Concentrate on hobby development
- Limited admissions in order to provide individual attention
- Lessons in drawing and painting
- Children are kept busy with various activities and their homework overseen
- Variety of interesting objects and textures to provide them with physical challenges
- Nutritious and hygienic food is provided. Outside food is not allowed at our premises in order to maintain hygiene standards
- Parent-teacher interaction
- Doctors on call

**ADMISSIONS
OPEN**



Admissions to The Shiishyaa are now open. We follow the CBSE pattern of education and combine learning with a wide range of extra curriculars and art with highly qualified teachers and proven learning methods.

The Shiishyaa School is an integral part of the Shiishyaa Educational Society that was founded in March 2010, with the aim of creating a passion for continuous learning and enriching lives. A good, stable holistic foundation is key to any child's future and we at The Shiishyaa school believe in nurturing and guiding the child to unleashing their vast untapped potential. Shiishyaa focusses on more than just memorization and emphasises on intelligence both intellectually and emotionally.

